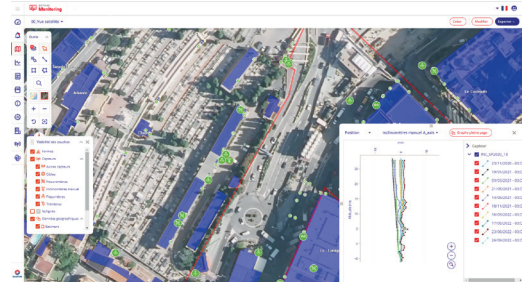


# Beyond Monitoring

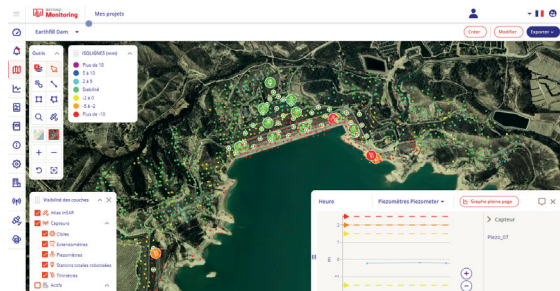
## Real-time data management of your monitored sites

### YOUR CHALLENGES

- **Centralise** all your **monitoring data** in one safe and simple to access place
- Help engineers **understand** and **analyse** your data
- **Simplify** your **understanding of movement phenomena** on a global level
- Manage **measurements in real-time**, with alarms, calculations



### OUR SOLUTION



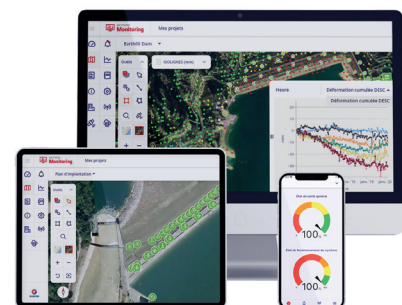
Beyond Monitoring is a **software tool** that allows **real-time** management of monitoring data from your **site(s)** and the **environment**.

It is a **decision-making** tool that enables you to **anticipate** and **manage geotechnical, environmental and structural risks**.

Beyond Monitoring enables the **integration of all data formats**, from multiple sources, including third parties.

### THE BENEFITS

- **A tailor-made solution**  
Beyond Monitoring is a **scalable** and **customisable** solution to meet your needs and the requirements of your project.
- **Less data, more information**  
Every measurement **improves** your **understanding** of each structures' behaviour: Beyond Monitoring transforms **data** into **information**.
- **Real-time information**  
Beyond Monitoring features **real-time data** visualization and automatic alarms when readings exceed pre-defined thresholds.



## Sixense's

• 20 years of experience in instrumentation and monitoring.

• Extensive knowledge of measurements, civil engineering and geotechnics.

• Peace of mind: reliable, accurate and useful measurements throughout the duration of your project.

• Ability to offer optimised solutions combining the latest and most reliable technologies.

### CONTACT US

› [monitoring@sixense-group.com](mailto:monitoring@sixense-group.com)

# Beyond Monitoring

Real-time data management  
of your monitored sites

## MAIN FEATURES

### Real-time data processing

Beyond Monitoring processes real-time monitoring data using a powerful and versatile data-reduction engine. Integrating any type of data. Beyond Monitoring provides advanced data analysis and visualisation for simple or complex structures.

### Dynamic integration of information

With the possibility to integrate data whatever the source or format is, Beyond Monitoring can manage data from third parties: construction site progress, documents or photos.

### Alarm management

Advanced automatic real-time alarms can be configured that enable close scrutiny of the acquired data, and therefore your site's performance.

### Supports any type of sensor

All geotechnical, structural, hydrological, environmental sensors, through any logging system, IoT, wireless loggers, cabled loggers, proprietary loggers, cloud point data (InSAR, Scanner, etc.) Robotic theodolite and other surveying tools, Machines data, such as Tunnel Boring Machine data etc. can be used.

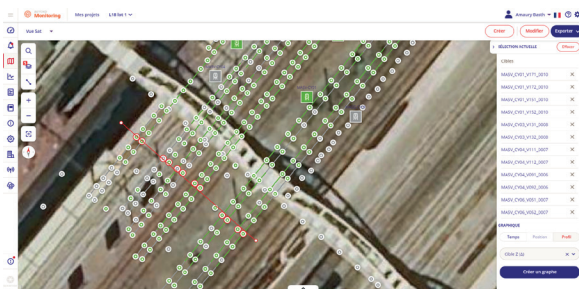
### Specific interfaces

Specific interfaces can be configured to individual user's requirements, providing them with filtered relevant information.

### Cloud, desktop and mobile solutions

In addition to a conventional desktop configuration, the mobile version of Beyond Monitoring makes your data readily available at any time & any place on your smartphone or tablet.

## APPLICATIONS & ASSETS



All projects and assets concerned with geotechnical, structural or environmental risk management:

- **Transportation infrastructure:** Tunnels, railways, roads, bridges, etc.
- **Hydraulic infrastructure:** Dams, dykes, docks, etc.
- **Buildings and monuments**
- **Mines and quarries**

## ASSOCIATED TOOLS AND SERVICES

- **Data quality control** and monitoring driven by **proactive maintenance** to ensure that measurements are precise and useful.
- **Intelligent alarms** and ready-to-use information.
- **Bespoke data management** configured to your specific requirements.
- **Geotechnical** and **structural expertise**, allowing a superior understanding of the measurements.



## REFERENCES

- Grand Paris Express, France
- ANDRA Laboratories, France
- Crossrail, London, UK
- Auckland Municipality, New Zealand
- Melbourne Metro, Australia
- Tunnel SR - Alaskan Way Seattle, USA

## CONTACT US

• [monitoring@sixense-group.com](mailto:monitoring@sixense-group.com)